

**Procedures for Public Use of School District Building and Grounds**

**I. Responsibility**

- A. Principals will be responsible for processing all requests for use of the buildings, including assigning rooms and establishing rules for use of the facility. This will include requests for gym use. The Director of Athletics will request use of the gym space (high school, middle school, and elementary school) for athletic events through the principals.
- B. The Director of Athletics will process all requests for use of district fields.
- C. The Business Office will assess fees for facilities use.
- D. The School Board will evaluate requests for exceptions to this policy, including the reduction or waiver of fees.

**II. Procedures**

- A. Groups and organizations wishing to use school buildings or grounds are required to submit a copy of the "Facilities Use Request" form at least 14 days in advance, to the principal of the building being requested, or to the Director of Athletics if requesting a field. If a waiver of the rules or fees is requested, it is to be so indicated on the form with clear rationale why the exception should be granted. The SAU Administration will present the waiver to the Board with a recommendation for disposition.
- B. Principals/Athletic Director will approve or deny the request (school events/functions take priority). The "Facilities Use Request" form will be used to approve usage.
- C. The Business Office will set fees and give or deny final approval for the event within the provisions of district policy. They will schedule custodial and maintenance coverage, and arrange with the Food Service Director for kitchen coverage as needed. Finally they will inform the requestor whether the request has been approved or denied.
- D. Any person or entity using school premises shall be responsible for the safety and welfare of all persons related to such use. They shall protect the School Board against any claims; however the same may be described or set, arising out of the use of the premises by such person or entity. To meet this obligation, such person or entity shall provide with their application for building use a copy of a certificate of insurance for Commercial General Liability insurance protecting the parties, their agents, officers, elected officials, representatives, or employees because of bodily injury, property damage, personal injury or products liability incurred by the parties in the use of the building, such policy to provide limits no less than \$1 million per occurrence. Such certificates of insurance shall name the school district as an Additional Insured. Such insurance contracts shall be with companies acceptable to the School District and they shall require ten days prior written notice to both parties hereto of any cancellation. The School District may make available for purchase event-specific coverage through its primary insurance carrier for organizations that do not carry such General Liability insurance to meet this requirement.
- E. In consideration for allowing the rental of school facilities and in full recognition of the board's fiduciary responsibility to protect owned property and assets, users

## ***APPENDIX KF-R***

of the school buildings will covenant and agree at all times to indemnify and hold harmless the School; its board, officers and employees, to the fullest extent permitted by law, from any and all claims, damages, losses and expenses, including, but not limited to, reasonable attorney's fees and legal costs, arising out of the use of these rental premises and all school facilities by the user, its officers, employees, agents, representatives, contractors, customers, guests, and invitees.

### **III. Regulations for Building and Field Use:**

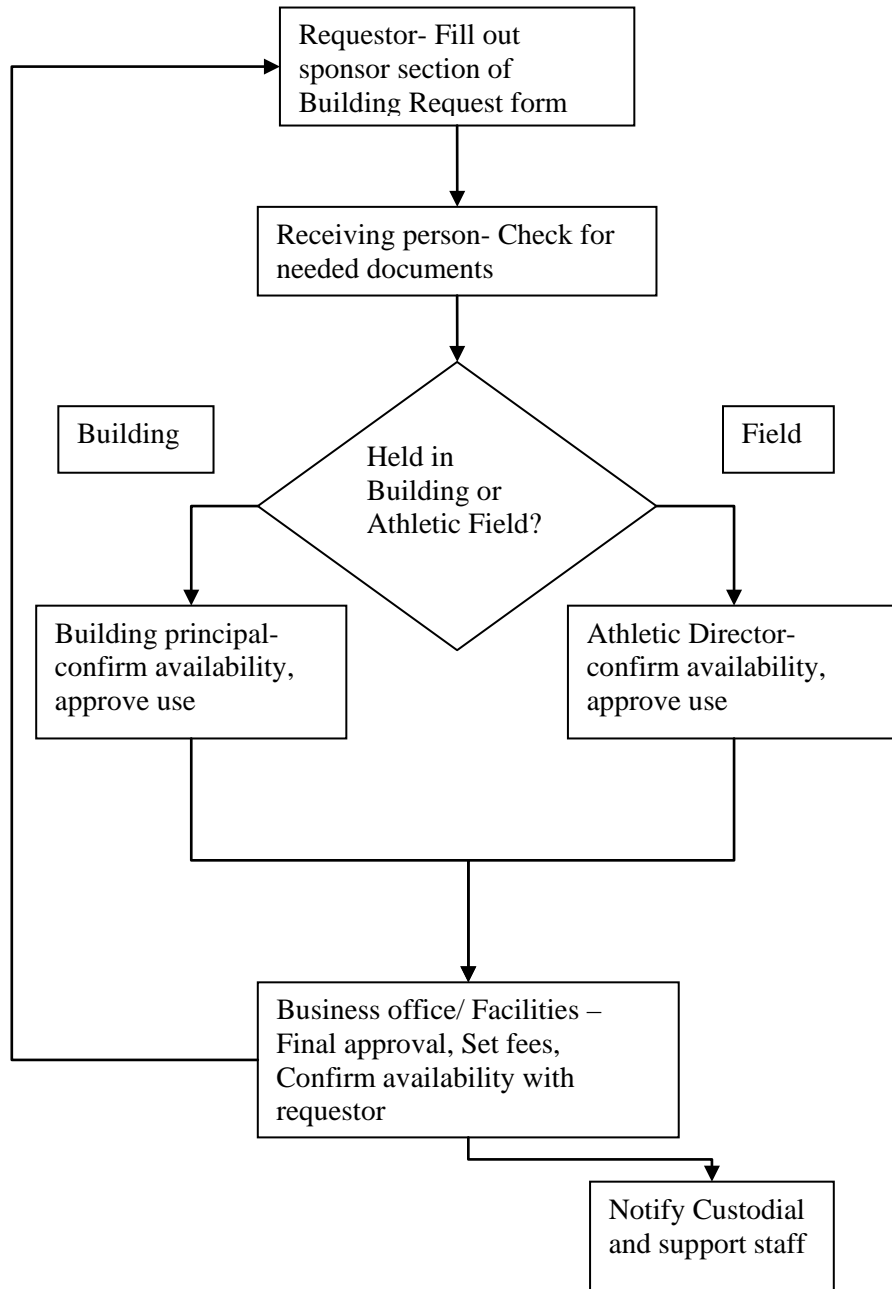
- A. Using organizations are limited to the areas they have requested for use. Organizations using the gymnasiums may have use of locker room space as well. Organizations using the building for events involving students or minors must supervise those students or minors at all times. Failure to do so may result in revocation of building use privileges.
- B. The kitchen areas may be used only when a cafeteria worker is hired to supervise the use of equipment.
- C. A custodian must be present when the school building is used by an outside group.
- D. In acknowledgement of the school's strictly maintained policy against the sale, possession, use, abuse, or consumption of alcohol or of controlled drugs as defined in RSA 318-B: 1, VI, or of a controlled drug analog as defined under RSA 318-B: 1, VI-a, Lessee covenants and agrees to vigorously enforce said policy during the use of the facilities and premises by the User, its officers, employees, agents, representatives, contractors, customers, guests, and invitees.
- E. Using organizations are responsible for setting up rooms and areas to support their function. All furniture and equipment will be replaced exactly as found after the facility is used. All trash, equipment and other items will be picked up after using the athletic fields.

### **IV. Fees**

- A. Fees for building use will not be charged to established Hillsboro and Deering community groups, groups that primarily benefit of Hillsboro-Deering students, groups that exist primarily to support the school and its students such as booster clubs and Parent-Teacher organizations, community education and the Hillsboro Youth Athletic Association. Custodial fees may be charged to any group if an event requires additional custodial support beyond the District's budgeted amounts.
- B. Building use fees and hourly rates for custodial workers, cafeteria staff, and maintenance staff will be established annually by the School Board. The using organization will pay these fees directly to the Hillsboro-Deering Cooperative School District.
- C. Fees must be paid two (2) weeks in advance of scheduled event. Failure to submit payment two weeks in advance of scheduled event may result in loss of space.
- D. Requests for use of school facilities by individuals and groups that charge a fee for services and for groups from outside of Hillsboro and Deering will be evaluated by the School Board and an appropriate usage fee will be assessed.

**APPENDIX KF-R**

**Facilities Use Request Form Approval Flowchart**



*APPENDIX KF-R*

<h2 style="margin: 0;">Hillsboro-Deering School District Facilities Use Request Form</h2>
---

Sponsor's Section	Facility Requested			Room Number or Type
	HDES	HDMS	HDHS	
Day(s) and Date(s)				
Hours	From:			To:
Name of Sponsoring Group				
Name of Group Contact				
Daytime phone			Evening Phone	
Email				
Billing address/city/state/zip				
Specific description of activity				

Estimated Attendance Min				Max		
Is this activity for HD Students?	Y	N		Is the organization a non-profit?	Y	N
Admission Fee to be Charged?	Y	N		Amount?		
Is Waiver requested for Building Use Fee? (Circle)	Y	N		Custodial Fee?	Y	N

**IF YES, PLEASE EXPLAIN. SCHOOL BOARD MUST APPROVE ALL WAIVERS.**

**IT IS AGREED** that in consideration for allowing the rental of the Hillsboro-Deering School District's owned facilities and in full recognition of its fiduciary to protect publicly owned property and assets, the Lessee hereby covenants and agrees to at all times hold harmless the Hillsboro-Deering School District, its officers and employees. To the fullest extent permitted by law, from any and all claims, damages, losses and expenses, including, but not limited to, reasonable attorney's fees and legal costs, arising out of the use of these rental premises and all facilities by the Lessee, its officers, employees, agents, representatives, contractors, customers, guests, and invitees.

The Lessee will provide a Certificate of Insurance reflecting Commercial General Liability coverage with limits of no less that \$1 million per occurrence, naming the Hillsboro-Deering School District as an Additional Insured.

It is understood that school events/functions have priority for the use of the school district's facilities and as such, outside groups may be bumped or displaced.

Signature of Legal Representative of Lessee _____
Print Name _____ Date _____
Print Title _____

**APPENDIX KF-R**

<p><b>Hillsboro-Deering School District Facilities Use Request Form</b></p>
---

You will be contacted by the approving agent upon acceptance of this request at the above listed contact phone/ email. Do not assume this event is approved until you receive confirmation.

**Approval Section:**

1. Recipient: (school personnel)  
 Certificate of Insurance **Yes**    **No**  
 Initial \_\_\_\_\_

2. Building principal: Confirm that facility in your building is available as requested  
**Or** Athletic Director: Confirm that athletic field is available as requested

Building Facility Reserved on: \_\_\_\_\_  
 Room being used \_\_\_\_\_  
 Use approved (circle one) Approved Disapproved  
 Reason for Denial (if applicable) \_\_\_\_\_  
 Signature \_\_\_\_\_

3. Business Office/ Facilities: Set fees, approve event (Signer is responsible to confirm event with requestor)

Use of Building Fee		\$ _____		
Custodial Fees	# Custodians	\$ _____		
\$25/hr per custodian	Hours per custodian	_____		
Kitchen Fees \$25/hr per staff member	# Cafeteria Staff	\$ _____		
	Hours per person	_____		
<table border="1" style="display: inline-table; border-collapse: collapse;"> <tr> <td style="padding: 2px;">Circle one</td> </tr> <tr> <td style="padding: 2px;">Approved      Disapproved</td> </tr> </table>		Circle one	Approved      Disapproved	Total Fees
Circle one				
Approved      Disapproved				
		\$ _____		
		Signature		

Comments/ Reason for Denial (if applicable) \_\_\_\_\_  
 \_\_\_\_\_

4. Scheduling

Entered in School Calendar \_\_\_\_\_  
 Custodial \_\_\_\_\_  
 Maintenance \_\_\_\_\_

*APPENDIX KF-R*

**Hillsboro-Deering Cooperative School District  
Public Schools Facilities Rental Information**

The facilities and rental fee schedule is as follows based on up to 4 hours of use:

Rental Space	Activity for H-D students	Non- Profit Group	For Profit/ Personal Use
Gym	0	\$65	\$400
Classroom	0	\$30	\$80
Cafeteria	0	\$65	\$200
Kitchen Facilities	0	\$65	\$200
Library	0	\$65	\$200

**Application for Use of a School Building:** Applications are available in all school offices and on the web site at [www.hdsd.org](http://www.hdsd.org). Once the application is completed it is forwarded to the building principal, and if necessary, the Business Administrator for approval.

The Athletic Director(s) are the contact persons for use of athletic fields. They can be reached by phone at Hillsboro-Deering High School at 464-1130.

At least one food service staff member must be present when the kitchen facilities are used. The food service staff fee for the 2007-2008 school year will be \$25/hr. A minimum of three hours is charged for kitchen staff.

For weekends and holidays, at least one custodian must be present to safeguard school property and to clean the facilities used. A minimum of three hours is charged for custodial services. The rate for custodial services for the 2007-2008 school year is \$25/hr.

All groups must have on file a current **Certificate of Insurance** with a minimum of \$1,000,000 liability coverage.